

State of Wyoming Corner Record

(In compliance with the *CORNER PERPETUATION AND FILING ACT*, Wyoming Statutes, 1997, Section 33-29-140, et seq., and the Rules and Regulations of the Board of Registration for Professional Engineers and Professional Land Surveyors)

Reverse side of this form may be used if more space is needed.

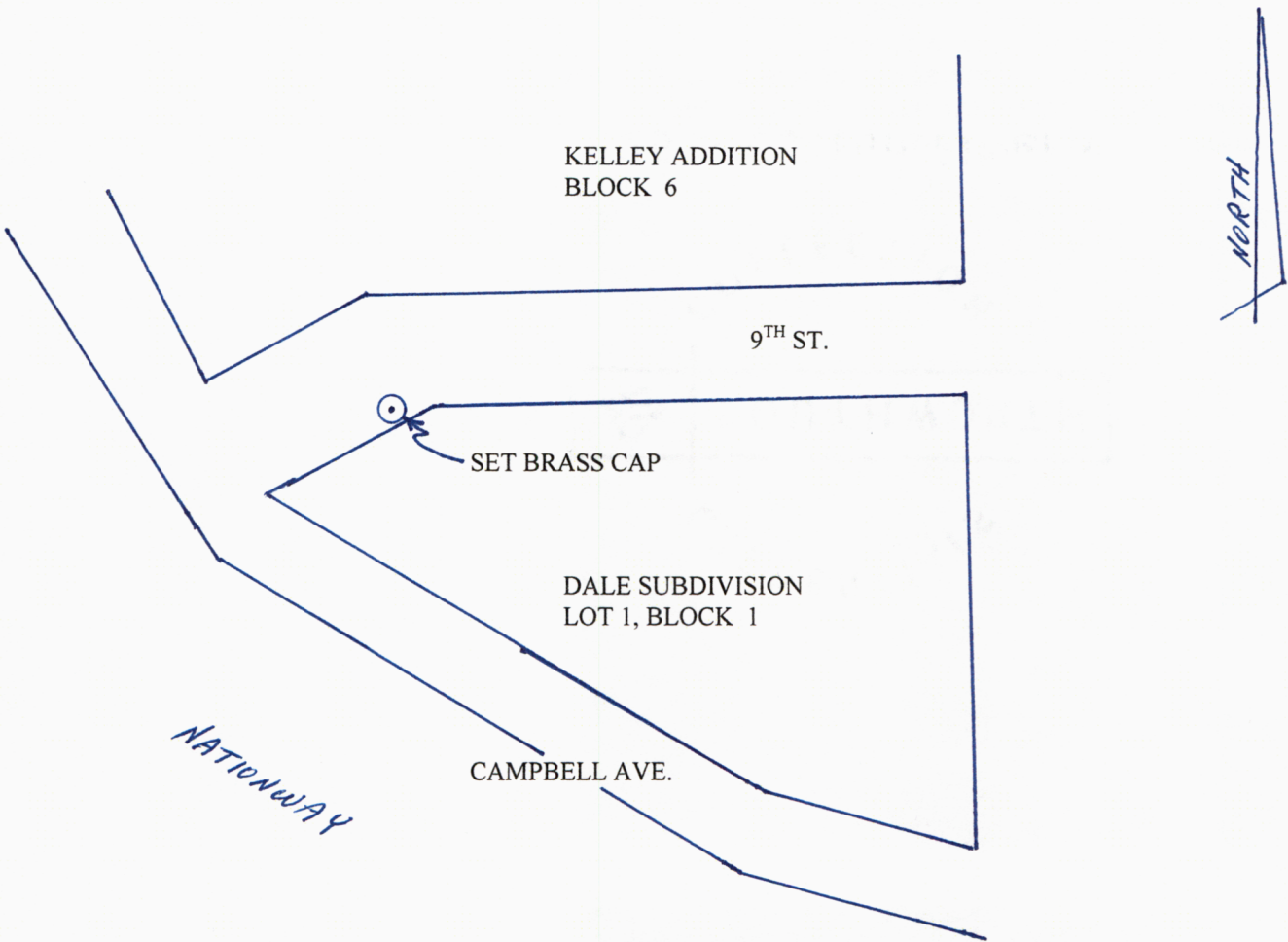
Record of original survey and citation of source of historical information (if corner is lost or obliterated). Description of corner monumentation evidence found and/or monument and accessories established to perpetuate the location of this corner. Sketch of relative location of monument, accessories, and reference points with course and distance to adjacent corner(s) (if determined in this survey). Method and rationale for reestablishment of lost or obliterated corner.

The General Land Office Townsite Survey for the "Survey of Cheyenne City" was issued under Contract No. 4 dated July 18, 1870; completed by Henry G. Hay and John B. Thomas, U.S. Deputy Surveyors on July 30, 1870; approved by Silas Reed, Surveyor General, Wyoming Territory on Aug. 11, 1870; presently recorded in the office of the U.S. Bureau of Land Management, Wyoming.

RECORD: SOUTHEAST CORNER - "Set Red Sand Stone 30 x 12 x 4 in Mound for S.E. Corner".

NOT FOUND: SEE - SURVEYOR'S REPORT on following pages.

SET: 3 1/4" diameter survey brass cap in a 3' long, 3/4" iron pipe inside a 6" diameter concrete cylinder set flush with existing sidewalk, in the 2100 block area on the south side of 9th Street. See RECORD OF SURVEY recorded in the Laramie County Clerk's Office under Reception No. 606184, Bk. 2313, Pg. 41.



Date of Field Work: June 2011 Office Reference: _____

CROSS INDEX DIAGRAM

	1	2	3	4	5	6	7	8	9	10	11	12	13	14	15	16	17	18	19	20	21	22	23	24	25
A																									
B																									
C		6																							
D			5																						
E				4																					
F					3																				
G						2																			
H							1																		
I																									
J																									
K																									
L																									
M																									
N																									
O																									
P																									
Q																									
R																									
S																									
T																									
U																									
V																									
W																									
X																									
Y																									
Z																									

Land Surveyor / Firm / Address

John J. Studley, LS No. 4828

City of Cheyenne, City Surveyor

2101 O'Neil Ave., Room 206

Cheyenne, Wyoming 82001

Telephone: **307-637-6274**

This corner record was prepared by me or under my direction and supervision.

SEAL & SIGNATURE



Corner Name: **Southeast corner - GLO Townsite Survey of Cheyenne City located in the SE 1/4 of** Section: 32 T 14 N, R 66 W ; 6th P.M.
 Cross-Index No.: +/- Y8 SBRPEPLS/PLSW: March 1994; PLSW January 1998

SURVEYOR'S REPORT

S.E. CORNER – G.L.O. SURVEY OF 1870 - Direct survey tie found in City Engineer Field Book 501, Page 6, dated April 1932 (ND), from a City Engineer waterline brass cap (existing today) to this corner; TRACT SEGREGATIONS plat by Z.E. Sevison, City Engineer, dated August 1937 (ND); and direct survey tie in City Engineer Field Book 413, Page 52, dated April 12, 1941; then numerous other dimensional ties to features from City Engineer Field Books confirmed reestablishment of this point. All of these survey ties and dimensional ties agreed within 0.20' of one another. I averaged the positions, and then tied to the GLO North Quarter Corner for Section 32, T14N, R66W, 6th PM and found this tie to be within 0.19' of the tie provided in City Engineer Field Book 501, Page 6.

This position fell in a sidewalk on the south side of 9th Street. I removed the sidewalk and excavated about 18" down, then probed with a steel rod another 3', and found nothing. City Engineer Field Book 501, Page 6 also described how this corner had been remonumented with a ¾" iron pipe, 3' long with a waterline brass cap, but metal locator signals in the area only revealed trash.

The position is now remonumented with a ¾" dia. iron pipe, 3' long, and a 3" dia. survey brass cap, in a 4" dia. concrete cylinder set flush with the concrete sidewalk.

RECORDED PLATS OR REFERENCES

- **KELLYS ADDITION TO CHEYENNE – April 19, 1887**
- **KRAE ADDITION – JANUARY 1989**
- **LOGAN AVENUE TRACT SEGREGATIONS – APRIL 1990**
- **CHEYENNE INDUSTRIAL PARK – OCT. 8, 1998**
- **DALE SUBDIVISION – SEPT. 22, 2006**

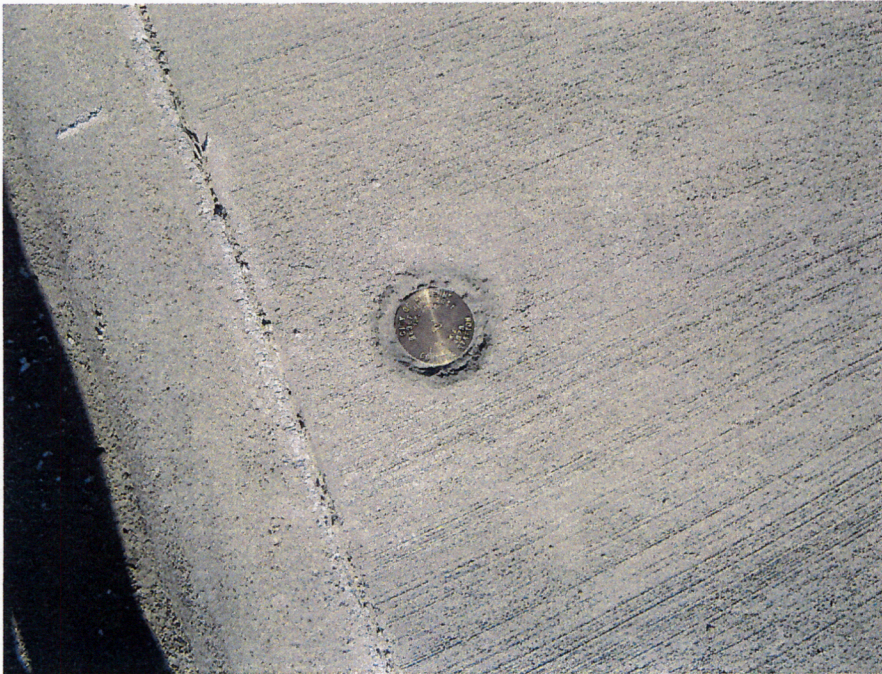


Figure 1 - Brass Cap view.

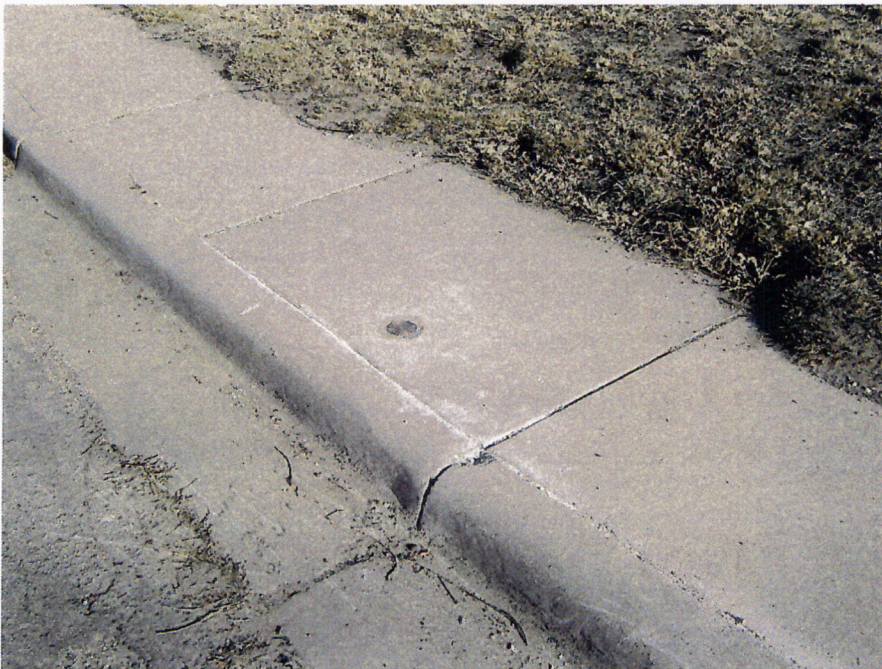


Figure 2 - Brass Cap set in sidewalk on south side of 9th St.